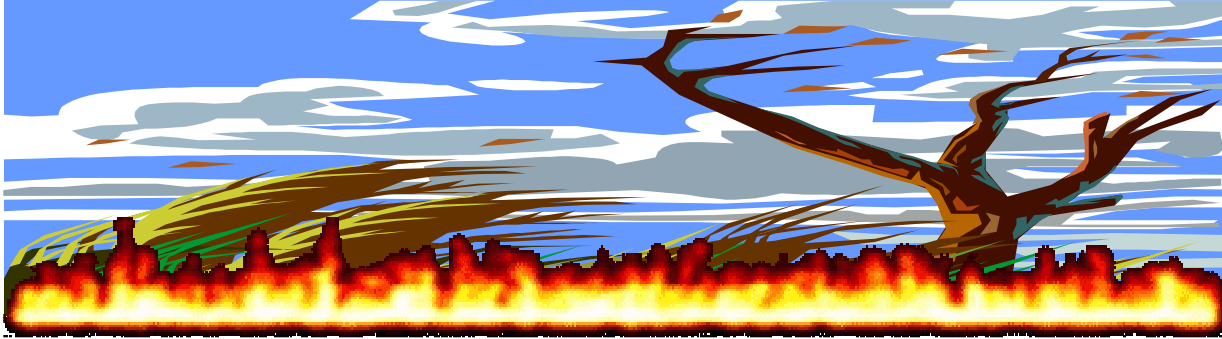




# SMOKEY'S MARCH TIP



After you have obtained that Burn Permit from your local Fire Department there are things you need to be careful with.



Don't Burn when the wind is blowing over 15 mph.



Mow or Disk a fire break around the area to be burned.



Don't burn an area too large for the amount of assistance available.



Have the proper equipment available.

**When in doubt, don't burn !!**